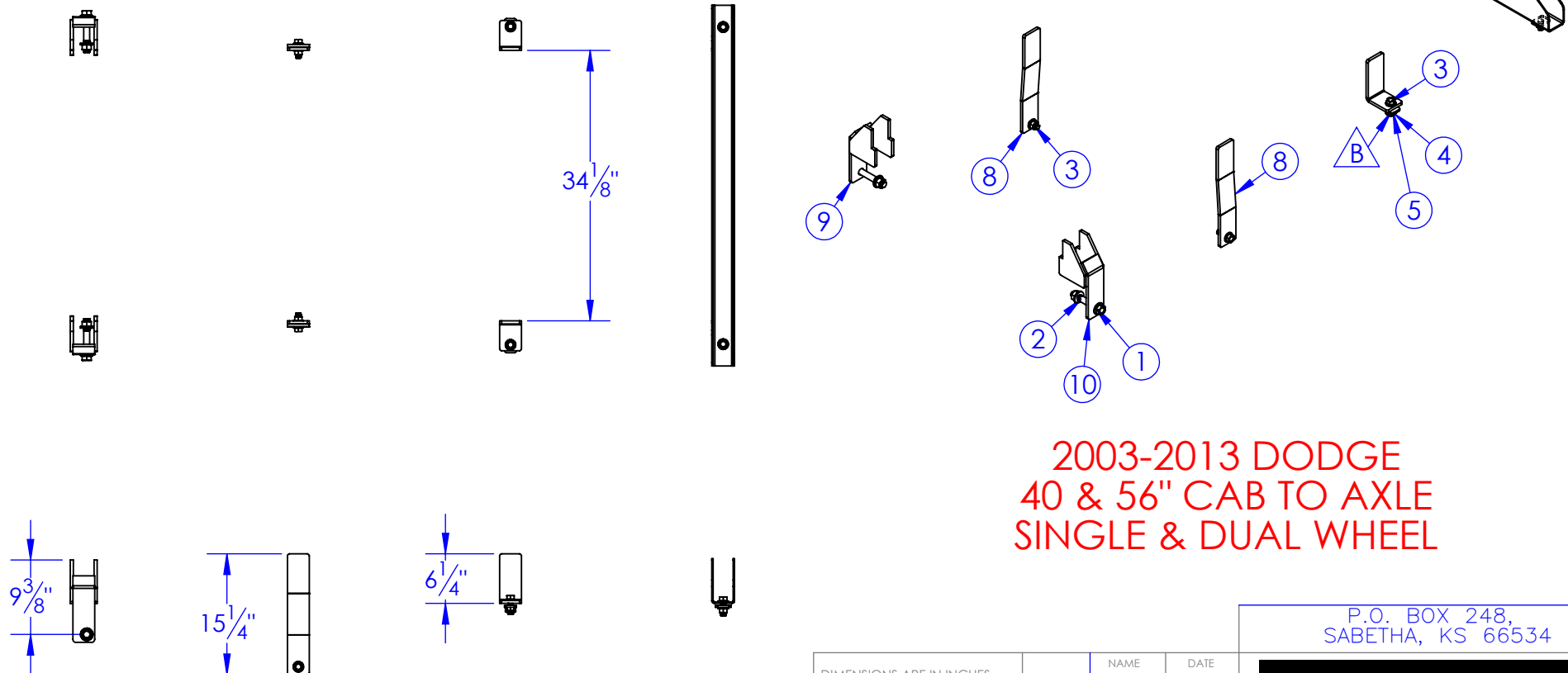


ITEM NO.	PART NUMBER	DESCRIPTION	DRAWING #	QTY.
1	BO-3/4x4-1/2 HCS	FLANGE BOLT 3/4x4-1/2	STOCK	2
2	BO-3/4 HNN	3/4" FLANGE NUT	STOCK	2
3	BO-5/8x1-3/4 FLHCS	FLANGE HEAD BOLT 5/8x1-3/4"	STOCK	6
4	BO-5/8 HNN	LOCK NUT 5/8	STOCK	6
5	FP-CLL2-7	LEVEL LOCK, FRONT REINFORCING PLATE	90-2805	4
6	FP-DLL4-1	FRONT CROSS MEMBER SUPPORT DLL-4	90-1824-21	1
7	FP-DLL4-2	FRONT, CENTER BRKT, DLL-4	90-1824-24	2
8	FP-DLL4-3	REAR, CENTER BRKT, DLL-4	90-1824-26	2
9	FP-DLL4-4	DRIVER, REAR BRKT, DLL-4, WLDMT	90-1824-28	1
10	FP-DLL4-5	PASSENGER, REAR BRKT, DLL-4, WLDMT	90-1824-29	1

REVISIONS			
REV.	DESCRIPTION	DATE	APPROVED
A	UPDATED FROM DWG # 10-1833 B	1/28/2013	
B	ADDED TWO MORE FP-CLL2-7	1/29/2014	

BOLT KIT LEVEL LOK DLL4
BO-KIT-90824



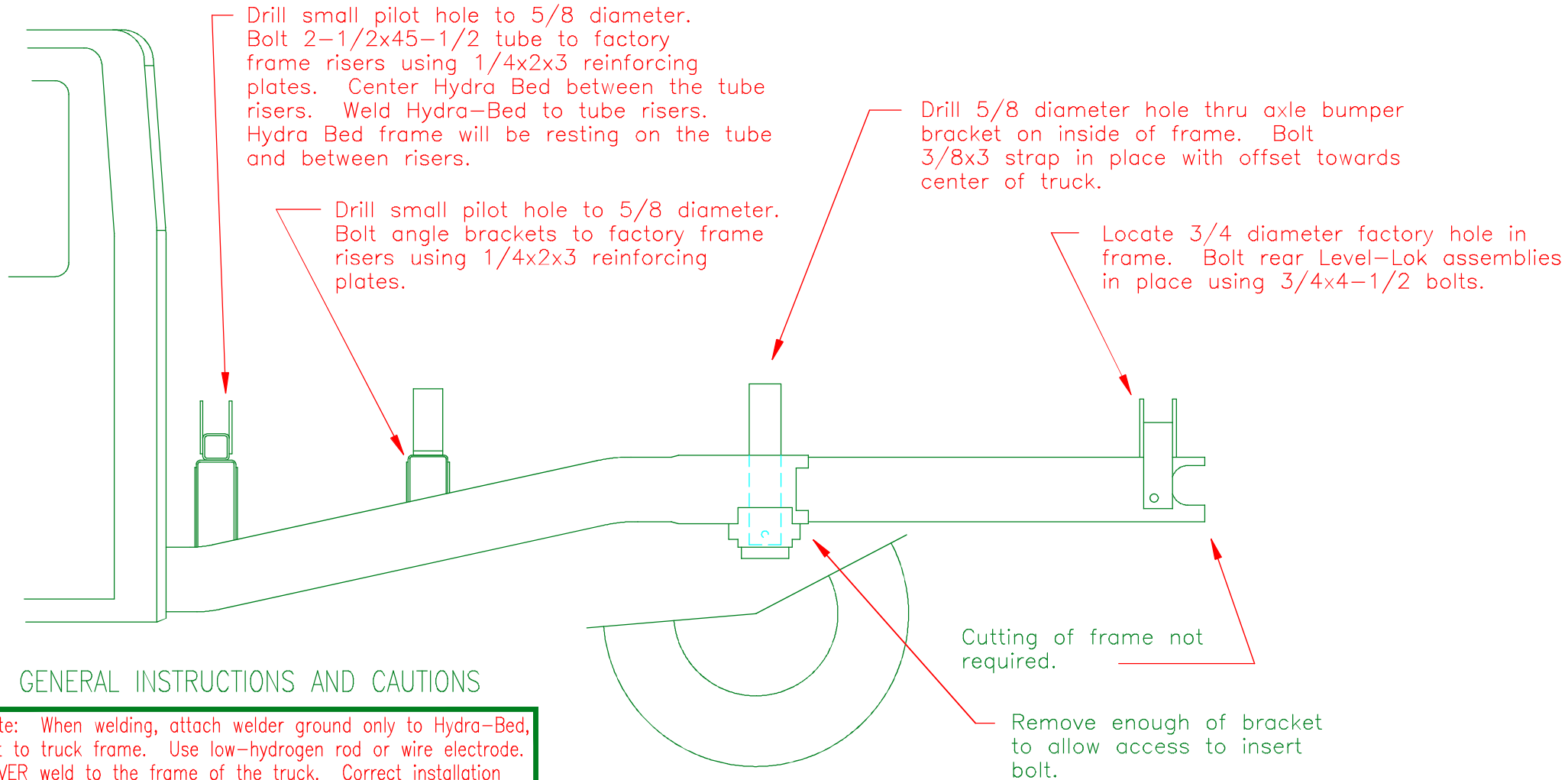
2003-2013 DODGE
40 & 56" CAB TO AXLE
SINGLE & DUAL WHEEL

PROPRIETARY AND CONFIDENTIAL
THE INFORMATION CONTAINED IN THIS
DRAWING IS THE SOLE PROPERTY OF TRIPLE
C INC. ANY REPRODUCTION IN PART OR
AS A WHOLE WITHOUT THE WRITTEN
PERMISSION OF TRIPLE C INC. IS PROHIBITED.

DIMENSIONS ARE IN INCHES TOLERANCES: FRACTIONAL $\pm 1/16$ ANGULAR: MACH ± 1 BEND \pm TWO PLACE DECIMAL ± 010 THREE PLACE DECIMAL ± 005	
MATERIAL	--
DO NOT SCALE DRAWING	

NAME	DATE
DRAWN HEATH	1/29/2014
PART # LL-DLL-4	
ASM #	
COMMENTS: DODGE LEVEL LOK TYPE 4	

P.O. BOX 248, SABETHA, KS 66534			
TRIPLE C INC			
SIZE A	DWG. NO. 90-1824 B	REV. B	
SCALE: 1:20	WEIGHT: 48.42	SHEET 1 OF 1	



GENERAL INSTRUCTIONS AND CAUTIONS

Note: When welding, attach welder ground only to Hydra-Bed, not to truck frame. Use low-hydrogen rod or wire electrode. NEVER weld to the frame of the truck. Correct installation of the Level-Lok system assures Front to Rear and Side to Side leveling as well as Left to Right centering of the Hydra-Bed. Never obstruct factory overload spring mounting locations.

When drilling truck frame, do not damage any part of the braking, fuel or electrical systems.

DLL-4 2003 and Newer Dodge
56" Cab to Axle Single/Dual Wheel